

KEY NOTES

- 1 BLACK OUT SHADES THIS ROOM
- 2 WALK-OFF MATT
- 3 STEEL GRATE
- 4 STEEL LOCKER, 12x12x30"
- 5 STEEL LOCKER, 24x24x30"
- 6 ROLL UP COILING DOOR
- 7 FIRE EXTINGUISHER CABINET
- 8 ENLARGER STATION: SEBASTIAN DESIGN K-25" DEEP X 42" WIDE OR APPROVED EQUAL
- 9 ADA ENLARGER STATION: SEBASTIAN DESIGN F-30" DEEP X 42" WIDE
- 10 MOTORIZED BLACKOUT SHADE
- 11 TERMINATE ELEVATOR PIT SUMP PUMP DISCHARGE PIPING WITH GOOSENECK AT 3'-0" ABOVE GRADE.

GENERAL NOTES

- 1. ALL PARTITIONS TO BE TYPE B30A UNLESS NOTED OTHERWISE.
- 2. ALL COLUMNS TO BE FURRED OUT WITH TYPE A10.
- 3. ALL DOORS TO BE LOCATED 6" FROM INSIDE OF FRAME TO FINISHED FACE OF ADJACENT WALL UNLESS NOTED OTHERWISE.
- 4. PROVIDE CONTINUOUS BLOCKING OR METAL STRAPS AS REQ'D FOR ALL WALL MOUNTED EQUIPMENT, CABINETS, SHELVING, WOOD CHAIR RAIL, ETC. ALL IN WALL WOOD BLOCKING SHOULD BE FIRE RETARDANT TREATED.
- 5. ALL DOOR NUMBERS ARE THE SAME AS ROOM NUMBERS, UNLESS NOTED OTHERWISE.
- 6. INSTALL ROLLER SHADES AT ALL WINDOWS
- 7. INSTALL MOP SHELF AT ALL JANITOR CLOSETS.

KEY PLAN:

- BULLETIN #39 2.12.2009
- BULLETIN #33 1.26.2009
- BULLETIN #13 9.23.2008
- BULLETIN #11 9.16.2008
- DCA COMMENTS 7.1.2008
- DCA COMMENTS 6.12.2008
- DCA COMMENTS 4.25.2008
- DCA COMMENTS 2.29.2008

NO.	REVISION/SUBMISSION	DATE

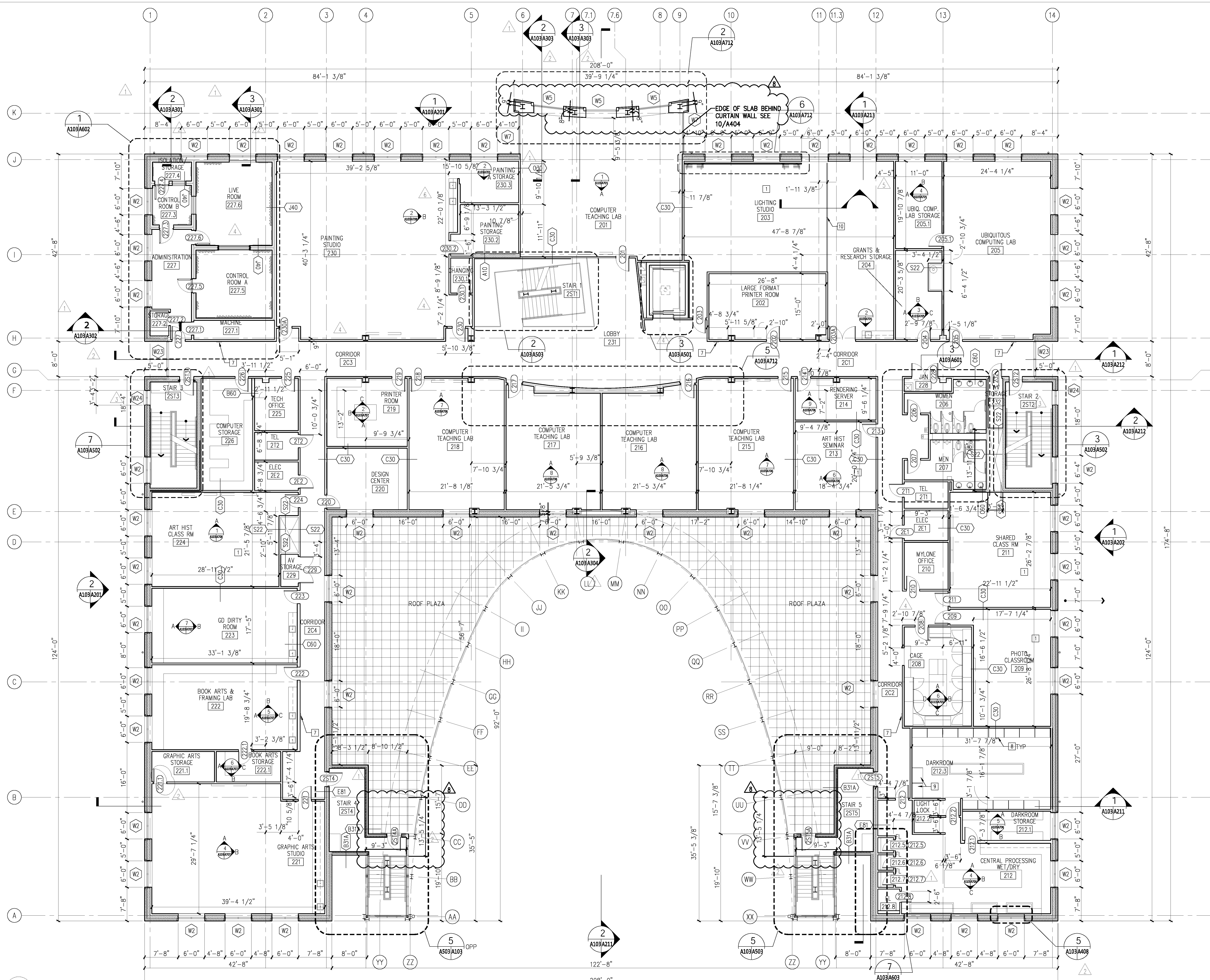
THE COLLEGE OF NEW JERSEY

New Art & IMM Building
Ewing, New Jersey

DATE: 11.16.2007
SCALE: 1/8"=1'-0"
EYP PROJECT NO. 1006041.01
DESIGNED BY: sk
DRAWN BY:
CHECKED BY:

Matthew S. Chalfoux
NEW JERSEY REGISTERED ARCHITECT
LICENSE NO. 12016

SECOND FLOOR PLAN



1 SECOND FLOOR PLAN
A103A103 SCALE 1/8" = 1'-0"