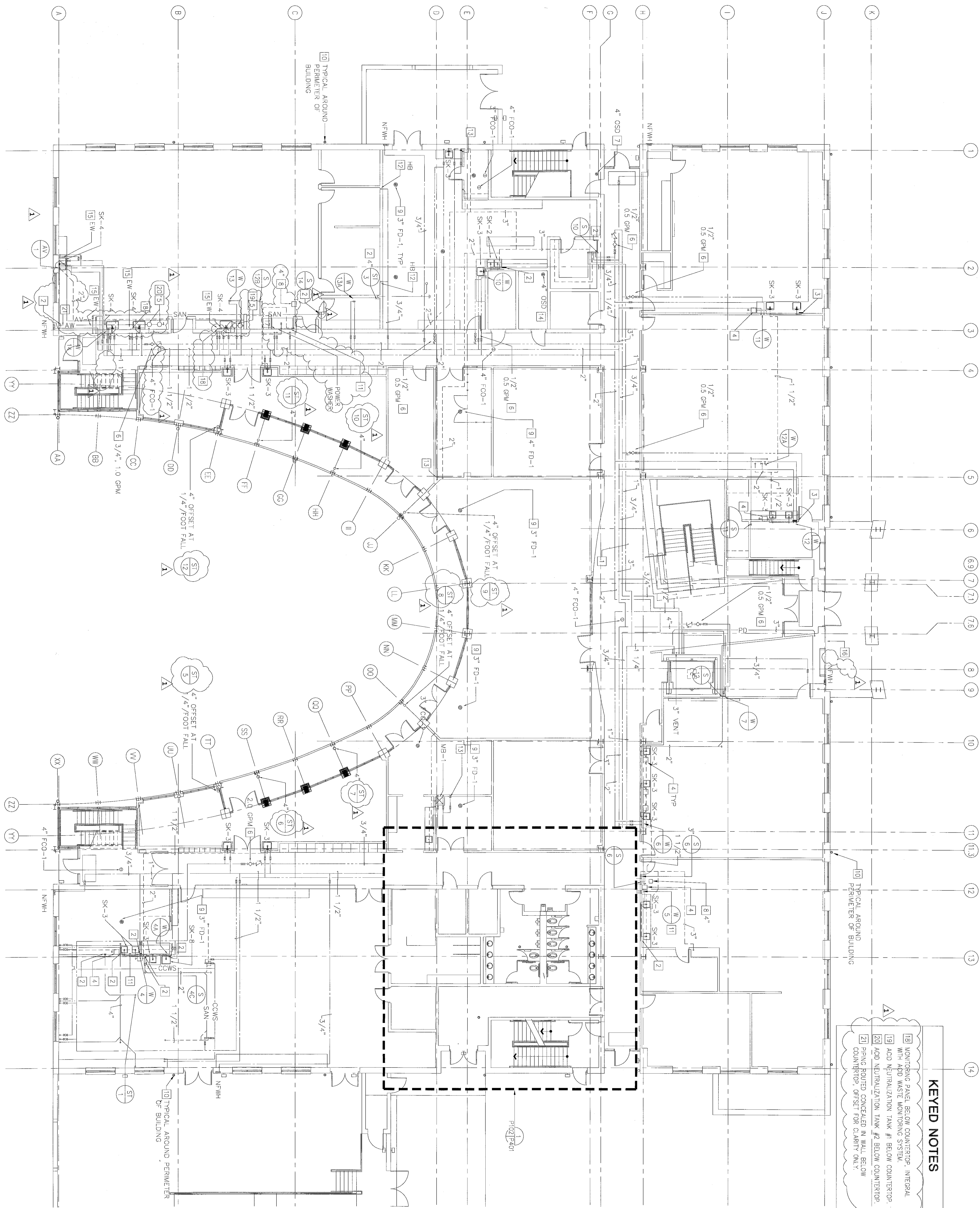


KEYED NOTES

- 1 PILING ABOVE CEILING, HIGH AS POSSIBLE.
- 2 ACCESS PANEL ON WALL LOW AS POSSIBLE FOR CLEANOUT.
- 3 ACCESS PANEL ON WALL LOW AS POSSIBLE FOR CLEANOUT AND SHUT-OFF VALVE(S).
- 4 SOLIDS INTERCEPTOR ON FLOOR.
- 5 ACID WASTE MONITORING SYSTEM BELOW COUNTERTOP WITH ACID NEUTRALIZATION TANK, SAMPLING TANK AND MONITORING PANEL.
- 6 BALANCING VALVE ASSEMBLY, BALANCE TO GPM INDICATED.
- 7 OPEN SITE DRAIN (OSD) RECEIVING INDIRECT WASTE FROM FINE SPRINKLER EXPRESS DRAIN. SEE FINE PROTECTION DRAWINGS.
- 8 FLOOR INTERCEPTOR WITH TRAP PRIMER.
- 9 FLOOR DRAIN WITH TRAP PRIMER.
- 10 DOWNSPOUT UP, AND DOWN TO DOWNSPOUT CONNECTOR AT GRADE. SEE DRAWING NUMBER P1101 FOR CONTINUATION OF PIPING AND DETAIL 6 ON DRAWING NUMBER P200.
- 11 WALL MOUNTED ACCESS PANEL ON WALL LOW AS POSSIBLE FOR ELECTRONIC TRAP PRIMER TP-3 INLET SHALL BE 1/2" OUTLET SIZE SHALL BE 1/2" DOWN BELOW FLOOR GRADE TO FLOOR DRAINING FLOOR INTERCEPTOR NEARBY.
- 12 RISER CONCEALED IN MASONRY BLOCK WALL.
- 13 WALL MOUNTED ACCESS PANEL ON WALL LOW AS POSSIBLE FOR ELECTRONIC TRAP PRIMER TP-4. INLET SHALL BE 1/2" OUTLET SIZE SHALL BE 1/2" DOWN BELOW FLOOR GRADE TO FLOOR DRAINS NEARBY.
- 14 OPEN SITE DRAIN RECEIVING INDIRECT CONDENSATE WASTE FROM MECHANICAL EQUIPMENT. SEE MECHANICAL DRAWINGS.
- 15 WALL MOUNTED ACCESS PANEL BELOW COUNTERTOP FOR THERMOSTATIC MIXING VALVE SUPPLYING EW/EV/WASH.
- 16 SEE ARCHITECTURAL DRAWING FOR LOCATION OF ELEVATOR SHIP PUMP DISCHARGE PIPING SPILLING ON GRADE.
- 17 QUANTITY OF TWO HOSE BIBBS ON BOTH HOT AND COLD WATER BELOW W/DRINK/WASH. SEE RISER DIAGRAM.

- KEYED NOTES**
- 18 NONTRIP PANEL BELOW COUNTERTOP, INTEGRAL WITH ACID WASTE MONITORING SYSTEM.
 - 19 ACID NEUTRALIZATION TANK #1 BELOW COUNTERTOP.
 - 20 ACID NEUTRALIZATION TANK #2 BELOW COUNTERTOP.
 - 21 PIPING ROUTED CONCEALED IN WALL BELOW COUNTERTOP, OFFSET FOR CLARITY ONLY.



APPENDIX #3 4.1.2008

NO. REVISION/SUBMISSION DATE

THE COLLEGE OF NEW JERSEY
 New Art & IMM Building
 Edison, New Jersey

FIRST FLOOR PLUMBING PLAN

DATE: 1/8-11-07
 EYP PROJECT NO. 1006941.01
 DESIGNED BY: JC
 DRAWN BY: CC
 CHECKED BY: RU

Aaron D. Koch
 NEW JERSEY PROFESSIONAL ENGINEER
 NO. 12C-00000000