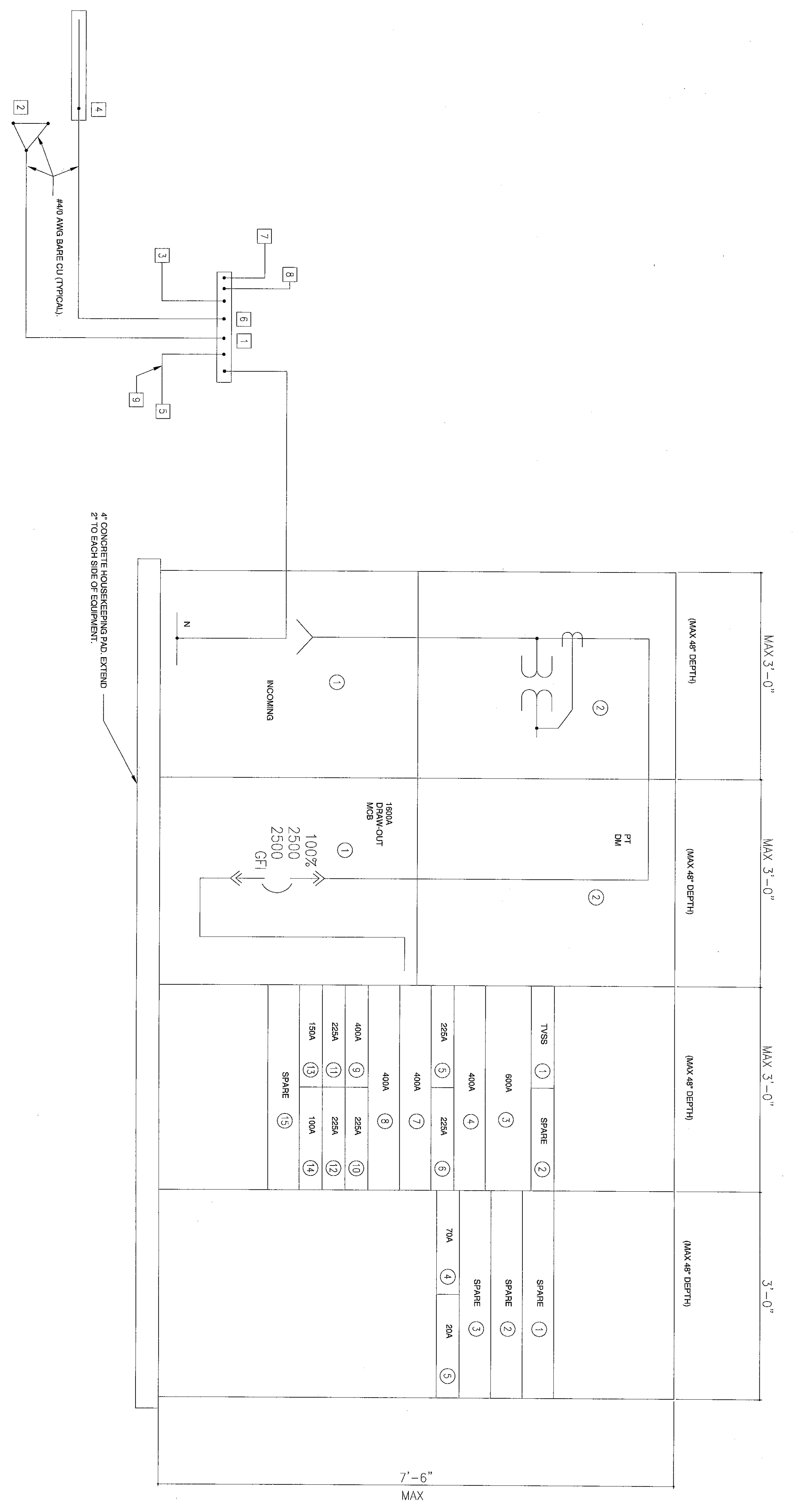


GENERAL NOTES
 1. xxx
 2. xxx

KEY NOTES
 1. xxx

1. 1/4" x 2" x 4" COPPER GROUND BUS SECURED TO WALL WITH STAND-OFF INSULATOR LOCATED IN MAIN ELECTRICAL ROOM APART FROM EACH OTHER.
2. THREE 10'-0" LONG 3/4" DIAMETER GROUND ROD SPACED 10'-0" ONE OF THEM SHOULD HAVE A TEST WELL.
3. TO BUILDING MAIN COLD WATER PIPE.
4. PROVIDE A CONCRETE ENCASED ELECTRODE TO BE USED AS ELECTRODE IS AN ELECTRODE ENCASED BY AT LEAST 2 INCHES OF CONCRETE LOCATED WITHIN AND NEAR THE DIRECT CONTACT WITH THE BUILDING FOUNDATION OR AT LEAST 20 FEET OF ONE OR MORE STEEL REINFORCING BARE OR COATED AND NOT LESS THAN 1/2" DIAMETER OR CONCRETE NOT SMALLER THAN NO.40 W/ GALVANIZED FINISH IS USED, A BROWSE ATTACH THE GROUNDING CONDUCTOR WHICH REQUIRES A MINIMUM OF 2 FEET OF ACCESSIBLE LENGTH AFTER MINIMUM OF 2 FEET OF CONCRETE ENCASEMENT. ALL CONDUCTOR RODS HAVING A NON-CONDUCTIVE COATING ELECTRODE BE USED FOR THE REQUIRED GROUNDING.
5. TO BUILDING STEEL.
6. ALL GROUNDING AND BONDING SHALL BE INSTALLED PER NEC 250.81, 250.82, AND AS PER SPECIFICATION SECTION 16060.
7. TO LIGHTNING PROTECTION GROUNDING RING.
8. 8#0 W/CS, IN 1/2" PVC TO MAIN TELEPHONE ROOM GROUND RING.
9. ALL GROUND WIRES SHALL BE #40 AWG, IN 1 1/2" PVC.



1 ELECTRICAL SWITCHBOARD ELEVATION

NO SCALE

CNU - SWITCHBOARD
 BASIC OF DESIGN: SQUARE-D SWBD CUTLER HAMMER
 480V/277V VOLT, 3PHASE, 4 WIRE 100% FULLY RATED
 MAN BUS: 2500A NEUTRAL BUS: 2500A
 GROUND BUS: FULL SIZE

100,000 KVA MINIMUM BUS BRACING INDIVIDUAL MOUNTED FOR MAIN GROUP W/TFD FOR FEEDERS
 UL SERVICE ENTRANCE LISTED & LABELED

ABBREVIATIONS:
 M MAIN PROTECTIVE DEVICE
 F FEEDER PROTECTIVE DEVICE
 CT CURRENT TRANSFORMER
 IC INCOMING LINE
 S SPARE
 SP BUSSED SPACE
 ET EMERGENCY TAP

OPERATION - M MANUAL
 E ELECTRIC

ACCESSORY - DMM DIGITAL MULTIPLE METER W/CT
 SST SOLID STATE TRIP DEVICE
 SPP SINGLE PHASE PROTECTION
 GF GROUND FAULT PROTECTION
 TVSS TRANSIENT VOLTAGE SURGE SUPP.

* REFER TO PANEL SCHEDULE FOR AIC RATINGS.

SECT. NO.	UNIT NO.	ITEM	TYPE	POLE	PROTECTIVE DEVICE		MIN. S/C KAIC	OPERATION	ACCESSORY	ITEM SERVED	CONNECTED	
					CIRCUIT BREAKER (AMP)	TRIP (AMP)					FUSE TYPE (AMP)	FUSE SIZE (AMP)
1	1	IC								METER		
1	2									MAN DMM		
2	1	M	LV	3	2500	2500	100	E				
2	2											
3	1	F	MC	3	100	100		M	SST	TVSS		
3	2	F	MC	3	225	225		M	SST	SPARE	133.2	160.5
3	3	F	MC	3	600	600		M	SST	HEBI	127.2	153.3
3	4	F	MC	3	400	400		M	SST	HET	92.0	110.8
3	5	F	MC	3	225	225		M	SST	H2E	108.1	130.2
3	6	F	MC	3	225	225		M	SST	H2E2	181.6	218.8
3	7	F	MC	3	400	400		M	SST	H3W1	63.4	78.8
3	8	F	MC	3	400	400		M	SST	H3E2	140.9	169.8
3	9	F	MC	3	400	400		M	SST	H1E2	79.5	95.8
3	10	F	MC	3	225	225		M	SST	SPARE		
3	11	F	MC	3	225	225		M	SST	F2S	111.8	134.7
3	12	F	MC	3	225	225		M	SST	ATS-LS	56.3	67.8
3	13	F	MC	3	200	150		M	SST	ATS-EM	47.7	57.5
3	14	F	MC	3	100	100		M	SST			
4	1	S	MC	3	400	400		M	SST	SPARE		
4	2	S	MC	3	400	400		M	SST	SPARE		
4	3	S	MC	3	400	400		M	SST	SPARE		
4	4	E	MC	3	150	150		M	SST	ELEVATOR	65.0	78.3
4	5	F	MC	3	100	20		M	SST	BUILDING METER		
										BUILDING CONNECTION LOAD	725.2	873.8

2 SWITCHBOARD SCHEDULE

NO SCALE

NO.	REVISION/SUBMISSION	DATE
1	ADDENDUM #3	4.1.2008

THE COLLEGE OF NEW JERSEY

New Art & IMM Building
 Englis, New Jersey

DATE: 2.20.2008
 SCALE: NOT TO SCALE
 EFP PROJECT NO: 100604101
 DESIGNED BY: MC
 DRAWN BY: MC
 CHECKED BY: EN

ELECTRICAL SWITCHBOARD ELEVATION & SCHEDULE