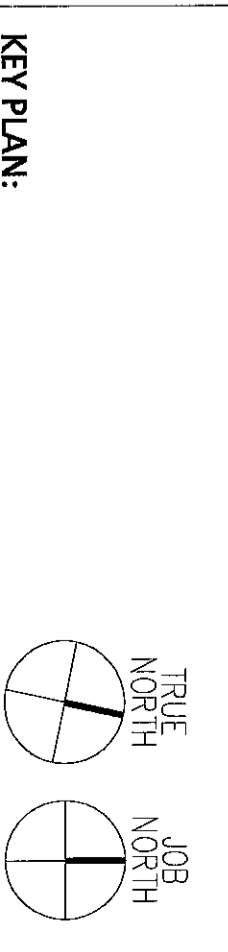
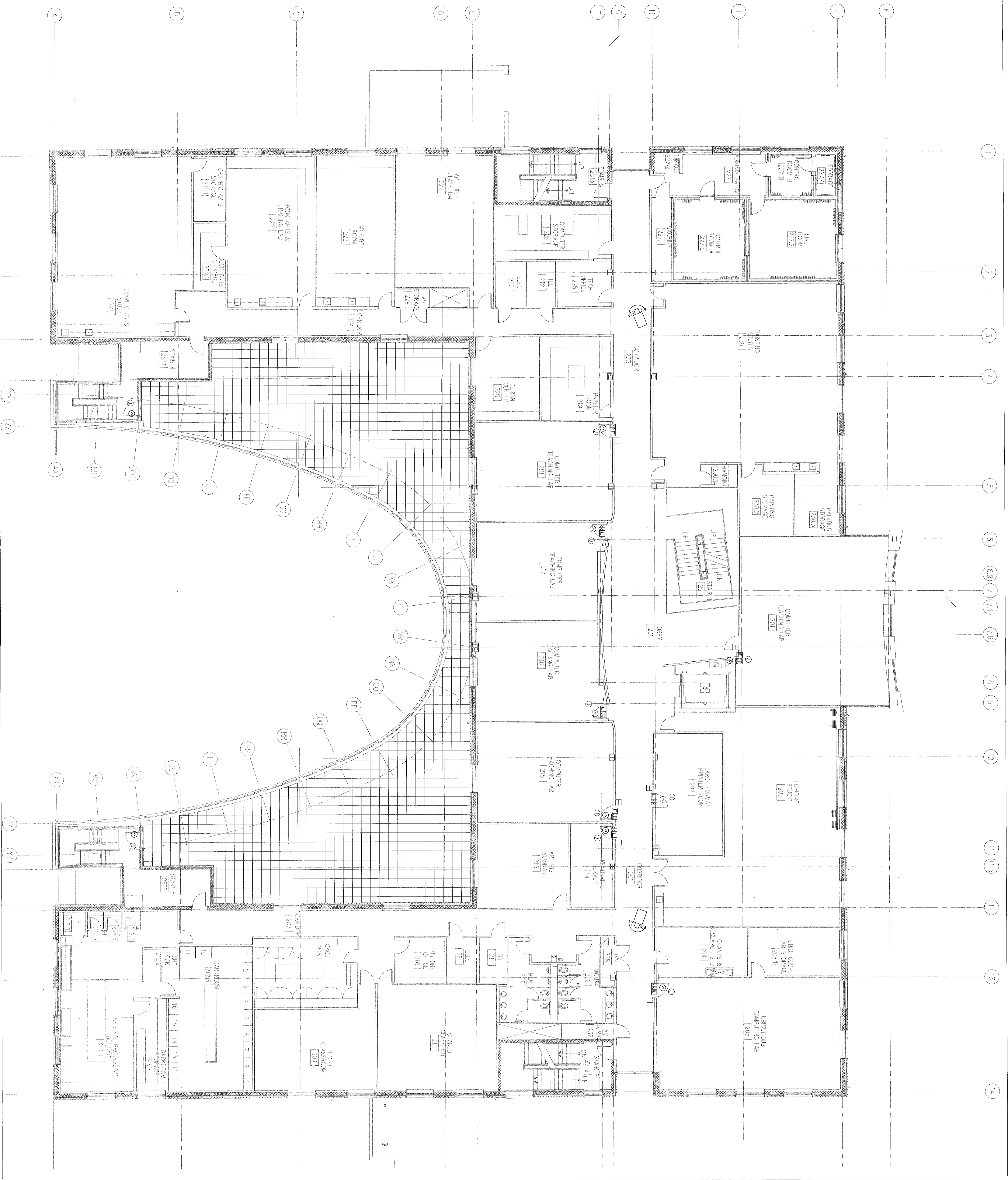


GENERAL NOTES
 1. PROVIDE JUNCTION BOXES AND 1" CONDUIT STRIP UP TO & ABOVE SUSPENDED CEILING FOR EACH LOCATION DEVICES.



NO.	REVISION/SUBMISSION	DATE
1	ADDENDUM #8	4.1.2008

THE COLLEGE OF NEW JERSEY

New Art & IMM Building
 Ewing, New Jersey

DATE: 2.20.2008
 SCALE: 1/8" = 1'-0"
 EYP PROJECT NO. 100604.01
 DESIGNED BY: MG
 DRAWN BY: MG
 CHECKED BY: EN

ELECTRICAL-SECURITY
SECOND FLOOR