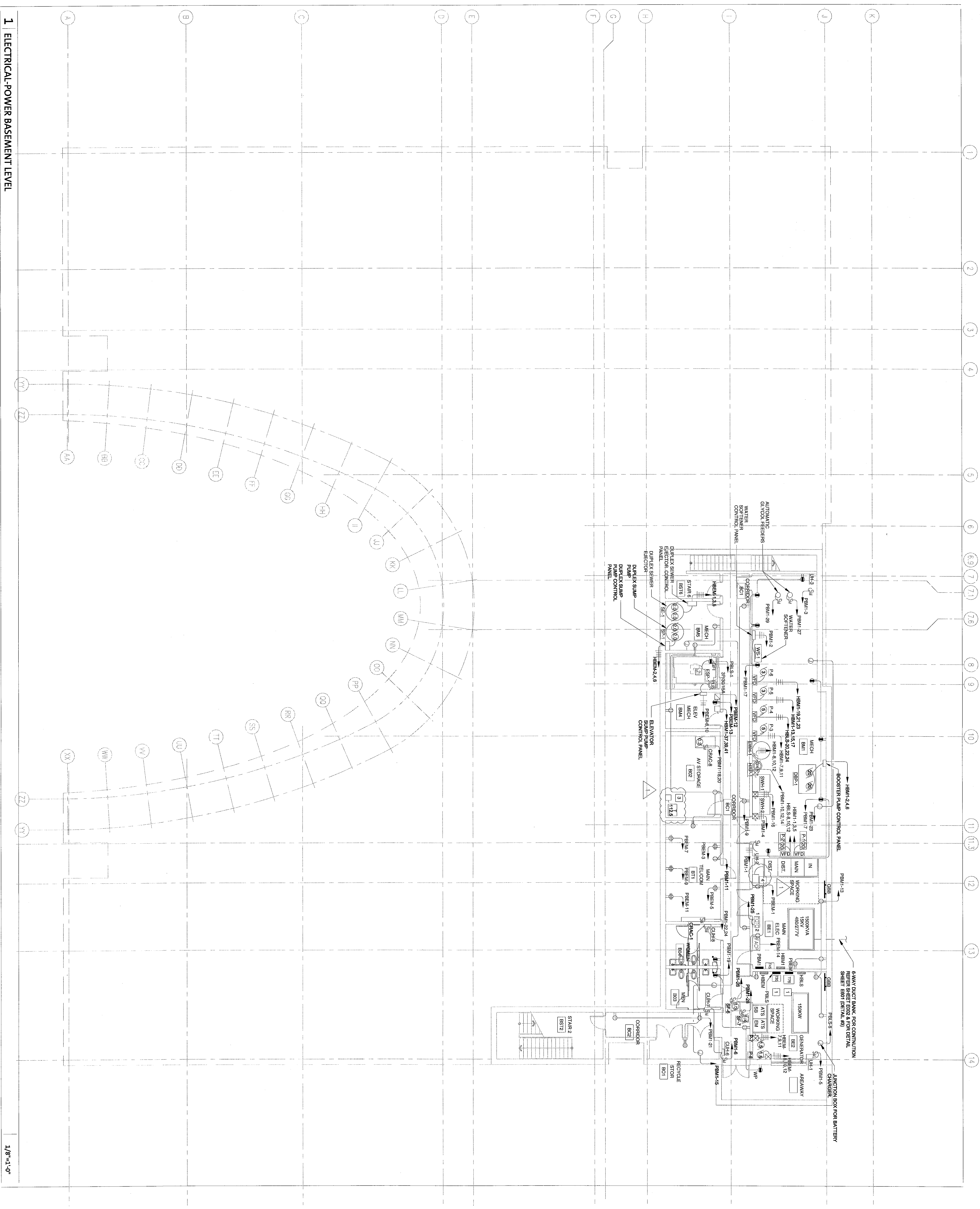


eypac.com

- GENERAL NOTES**
1. REFER TO MECHANICAL EQUIPMENT CONNECTION SCHEDULE ON ESTIMATOR WIRING DETAIL.
 2. REFER TO MECHANICAL AND PLUMBING DRAWINGS FOR EXACT EQUIPMENT LOCATION.

KEY NOTES

1. MOUNT TRANSFORMER ON WALL ABOVE PANEL. THE BOTTOM SHALL HAVE MINIMUM OF 7" OF CLEARANCE BETWEEN THE REAR OF THE TRANSFORMER AND THE WALL.
2. CONNECT TO THE PIT LIGHTS AHEAD OF RECEPTACLES. FOR LIGHT LOCATION REFER SHEET E101 AND COORDINATE WITH ELECTRICAL CONTRACTOR.
3. DISCONNECT SWITCH AND 112.5 KVA TRANSFORMER FOR PSE. BOTTOM OF EACH TRANSFORMER SHALL BE AT LEAST 7" BETWEEN THE REAR OF THE TRANSFORMER AND THE WALL.
4. BOX FOR BUILDING METERING SYSTEM MODEL 7500 BY POWER MENSUREMENT LIMITED. ALL EQUIPMENT AND ACCESSORIES ENCLOSED IN CONDUIT AND WIRING FROM MAIN SWITCHBOARD TO THE METER BOX BY ELECTRICAL CONTRACTOR.



1 ELECTRICAL-POWER BASEMENT LEVEL

1/8"=1'-0"

NO.	REVISION/SUBMISSION	DATE
1	ADDENDUM #3	4.1.2008

THE COLLEGE OF NEW JERSEY
New Art & IMM Building
 Ewing, New Jersey

DATE: 2.20.2008
 SCALE: 1/8"=1'-0"
 EYP PROJECT NO. 1006041.01
 DESIGNED BY: MC
 DRAWN BY: MC
 CHECKED BY: EN

ELECTRICAL-POWER
BASEMENT LEVEL

