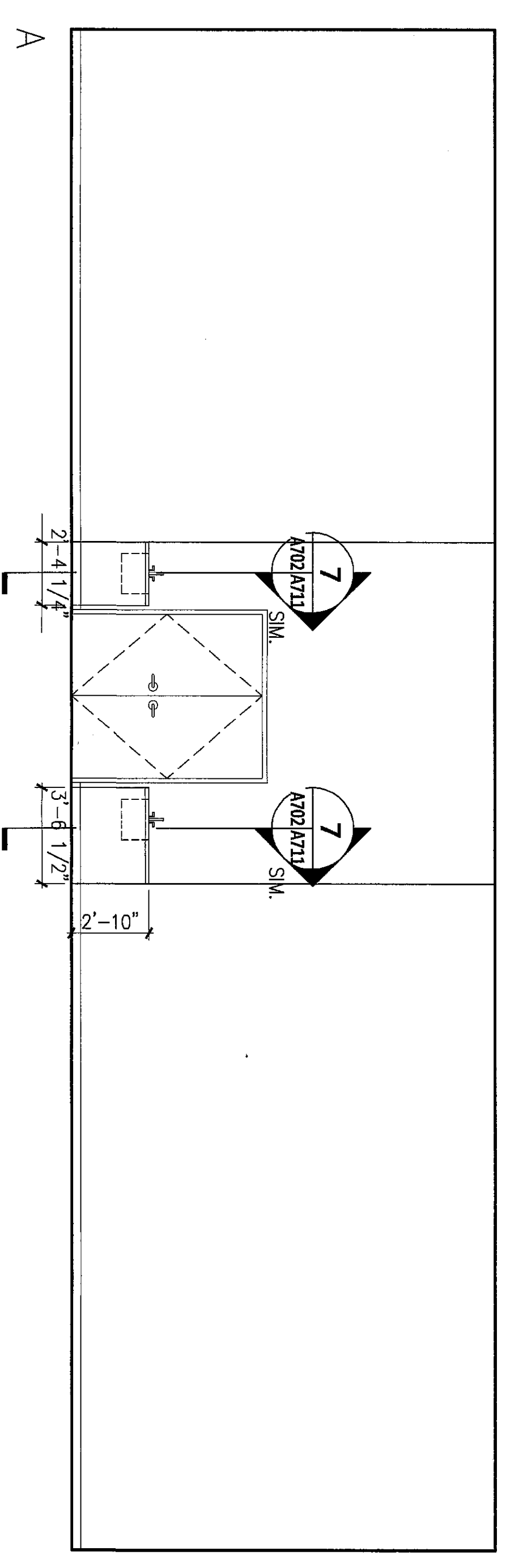
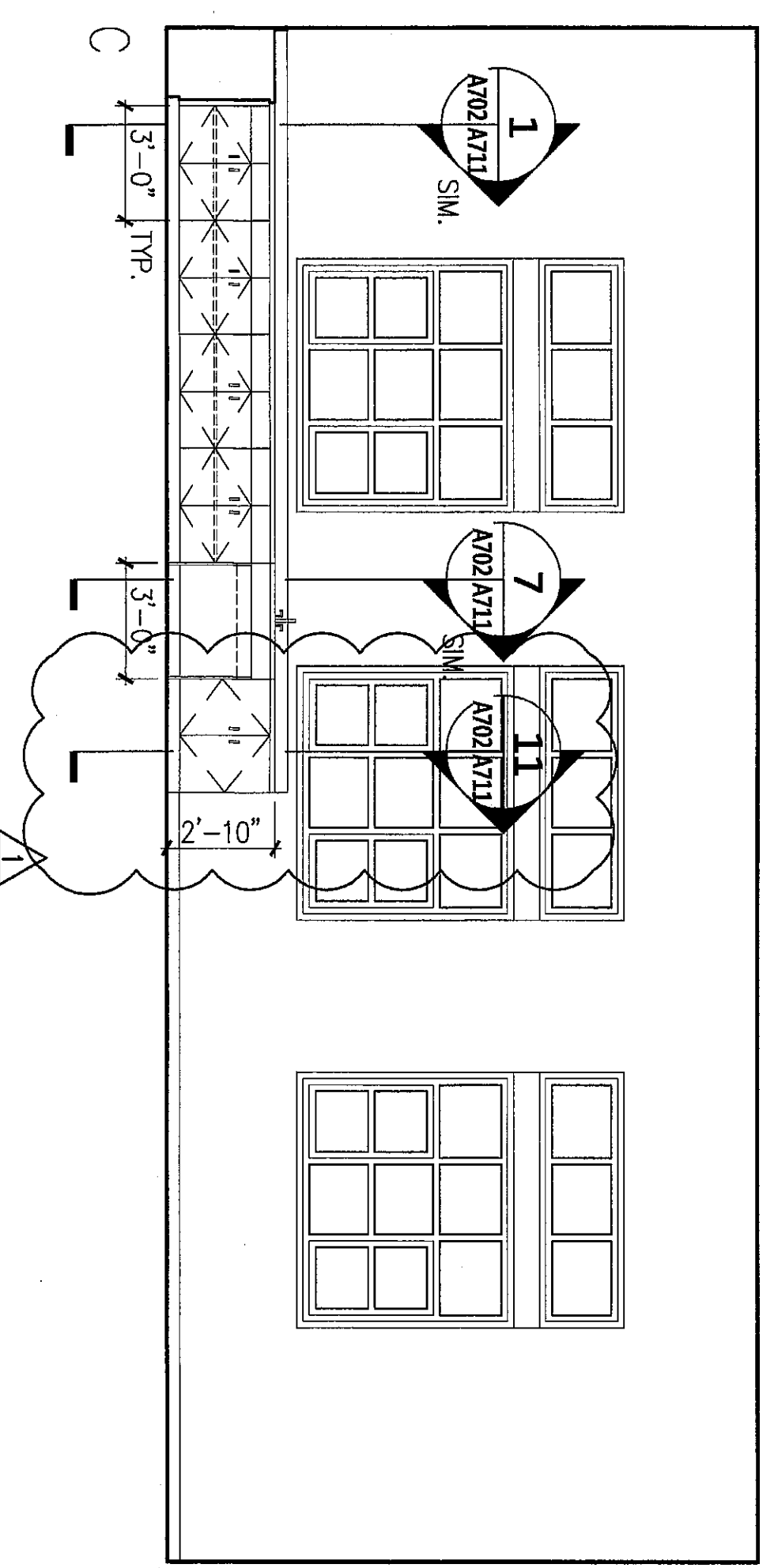
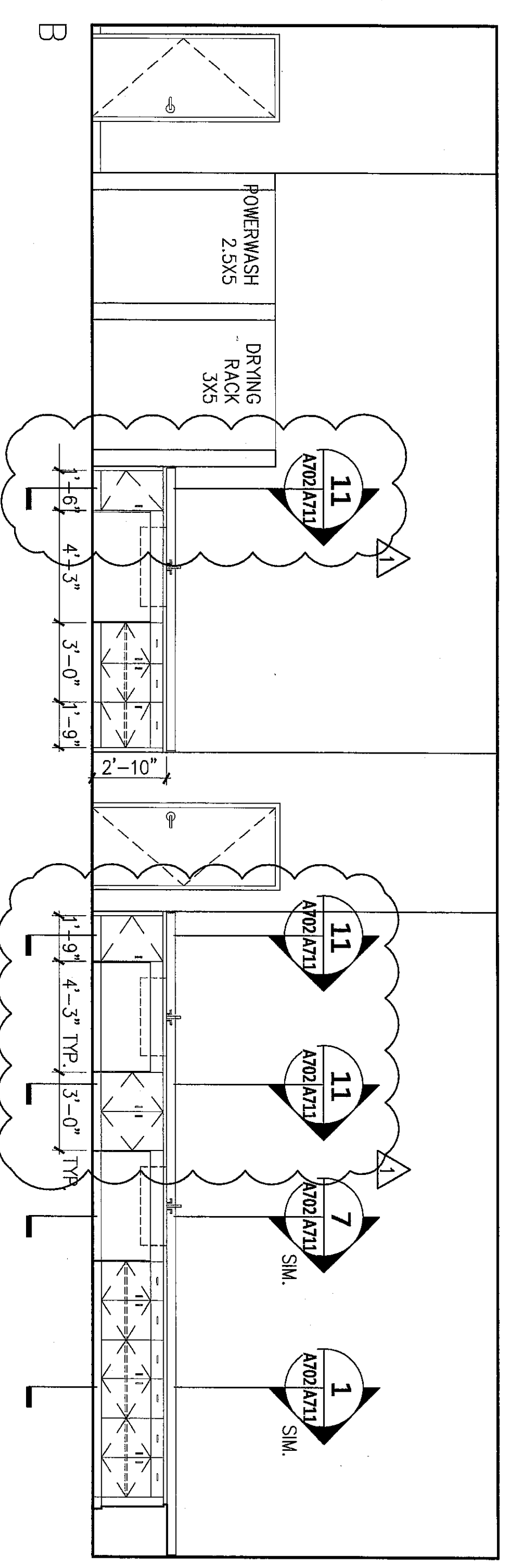
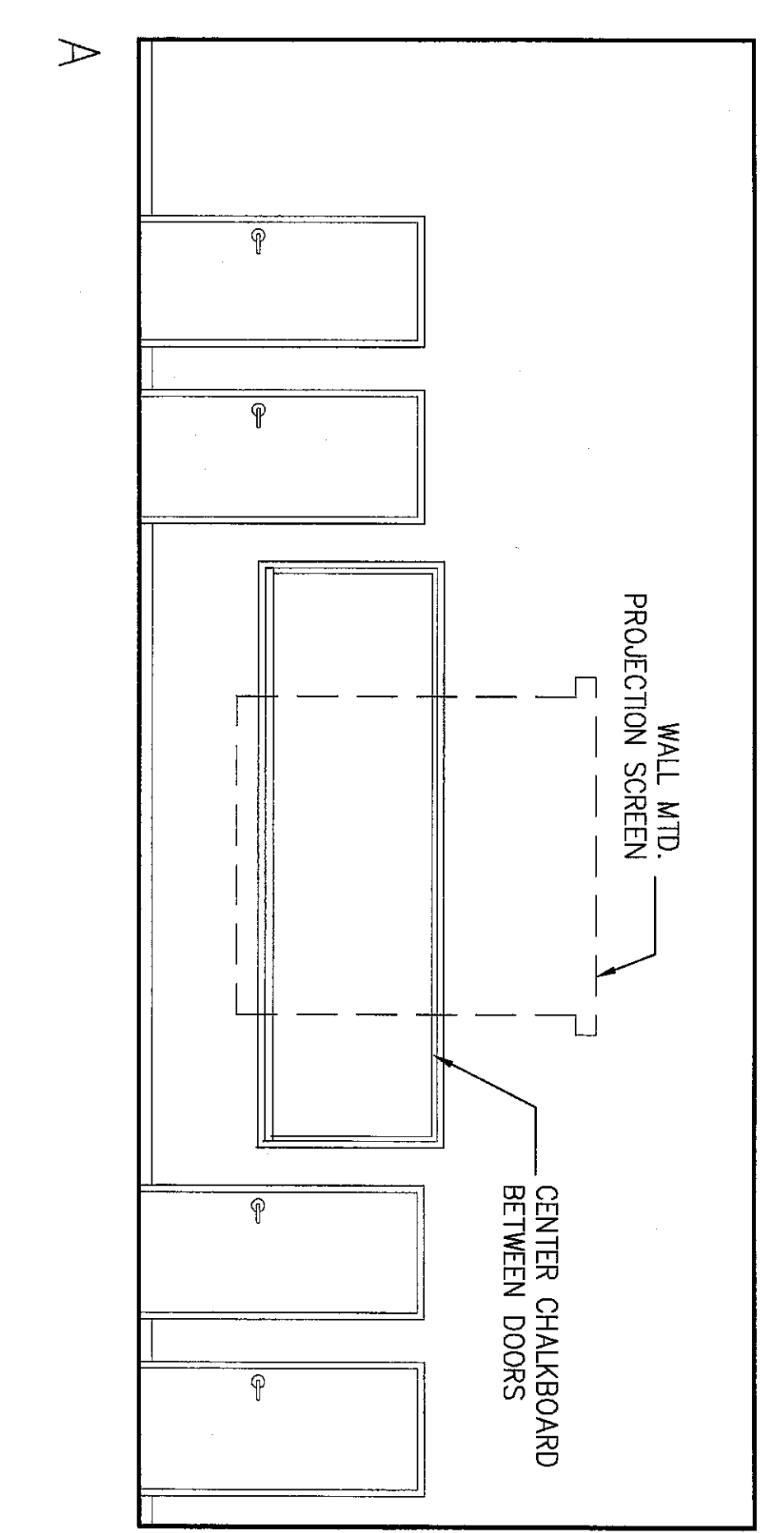
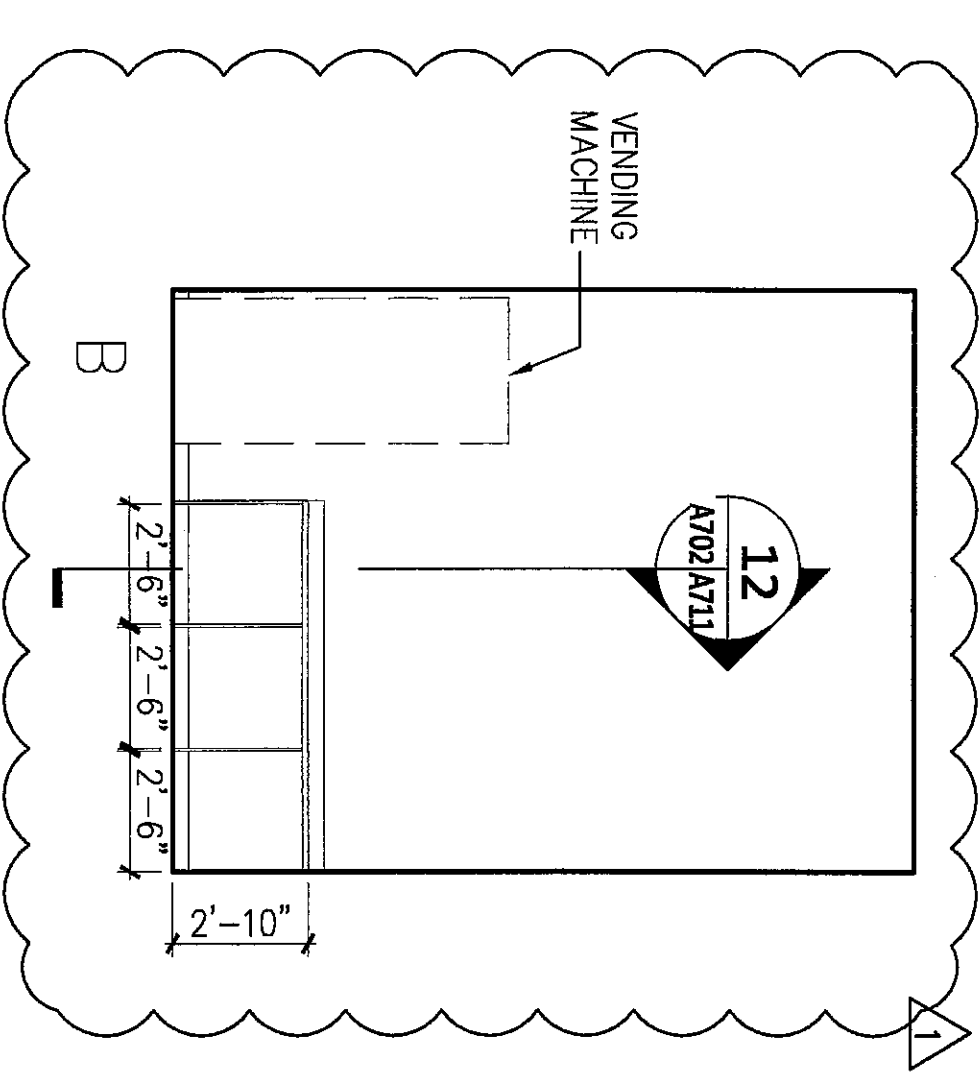
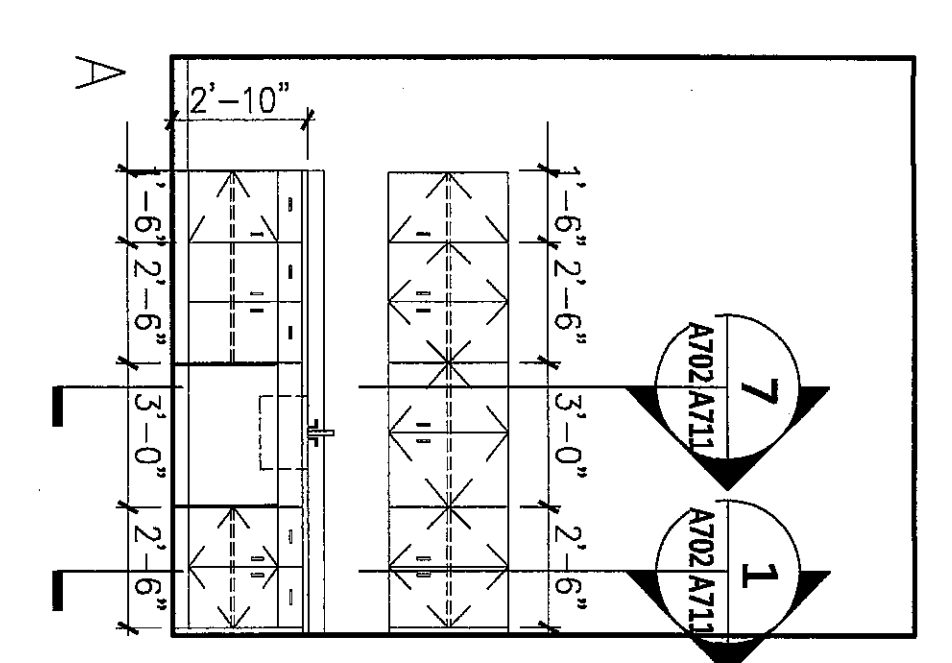


- GENERAL NOTES**
1. ALL CHALKBOARDS, WHITEBOARDS, AND TACKBOARD TO BE MOUNTED 30" AFF
 2. WALL MOUNTED PROJECTOR SCREEN TO BE MOUNTED 115" AFF

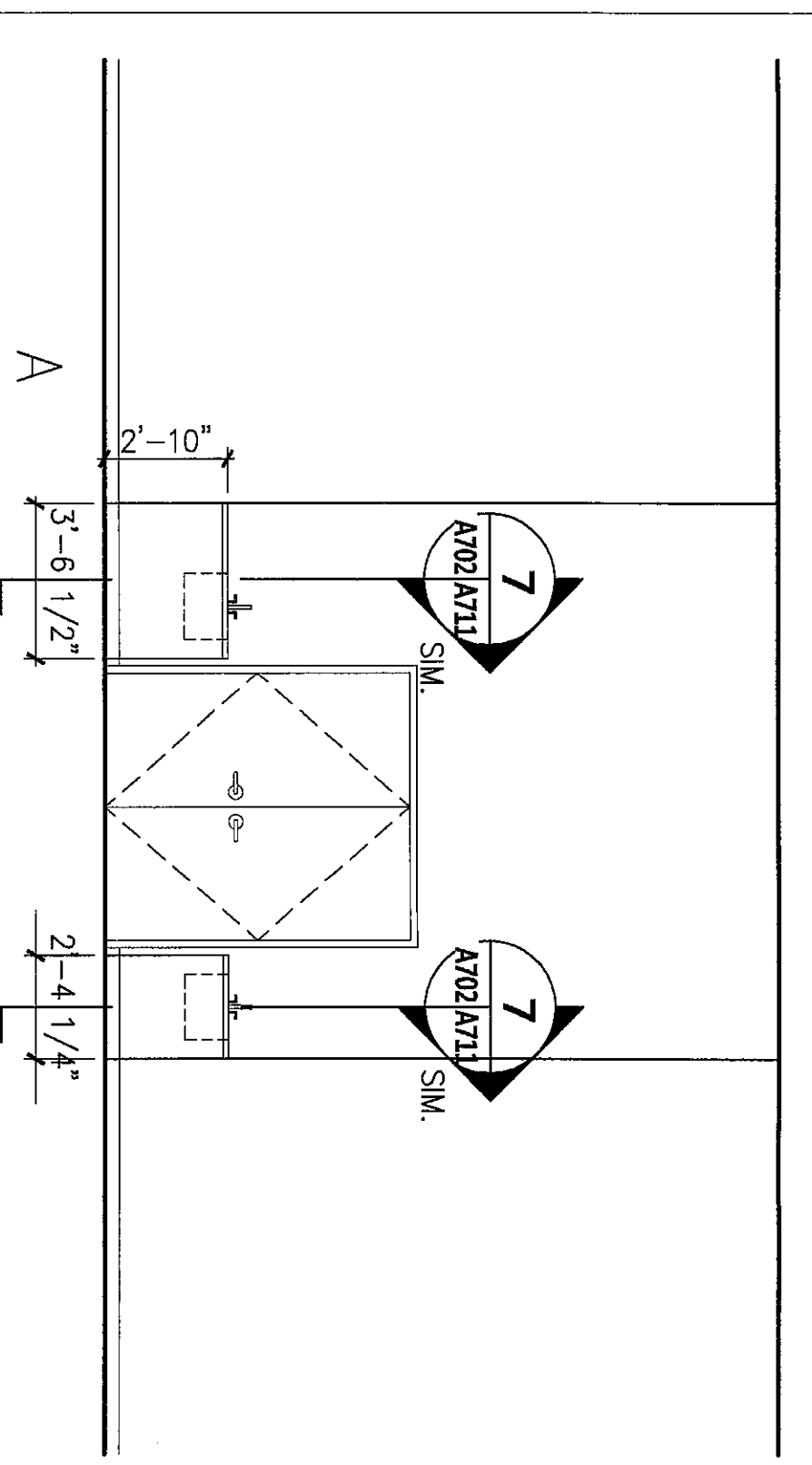


7 PRINTMAKING STUDIO 118
SCALE 1/4" = 1'-0"

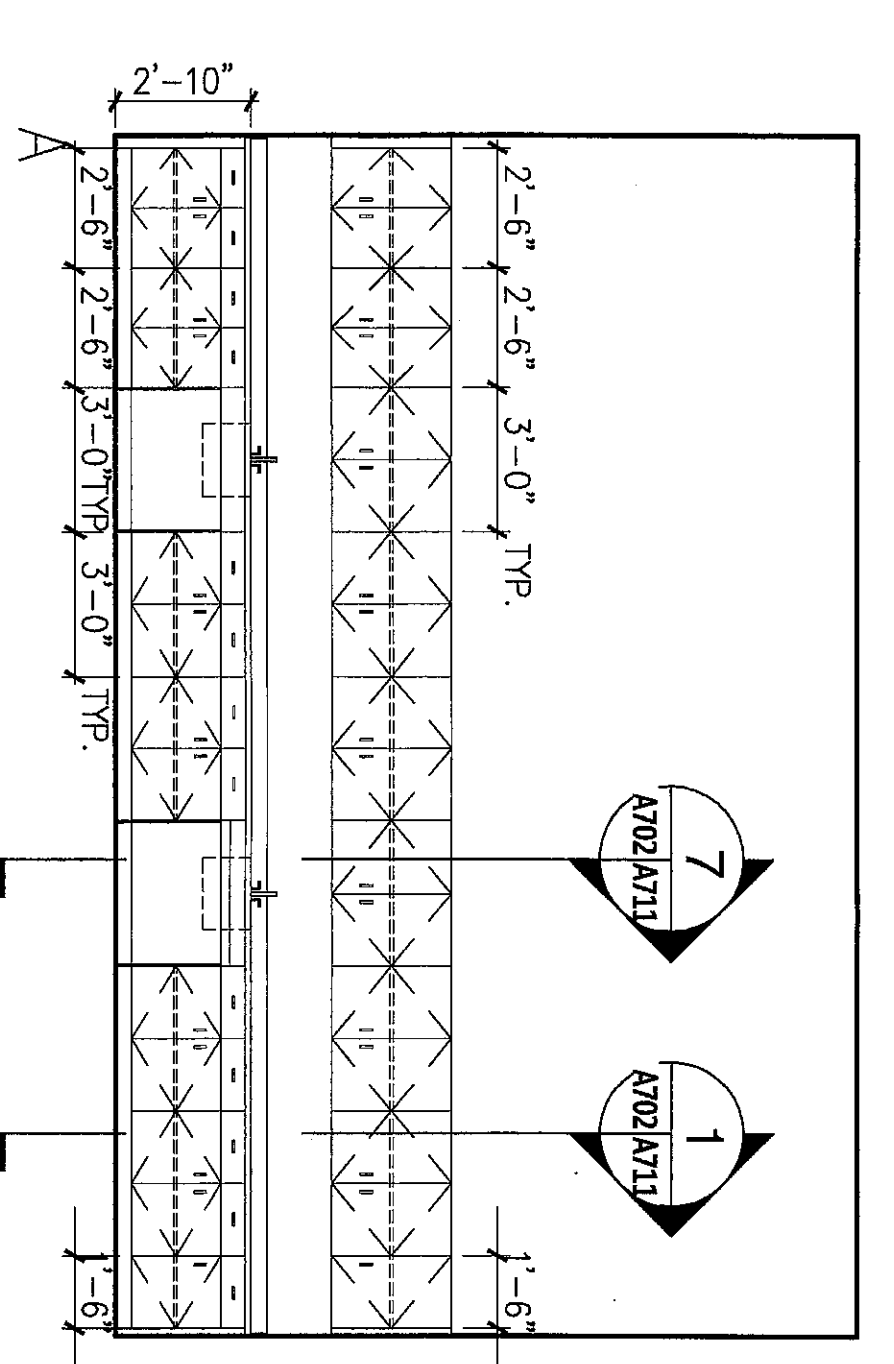
6 STUDENT STUDIOS 117
SCALE 1/4" = 1'-0"



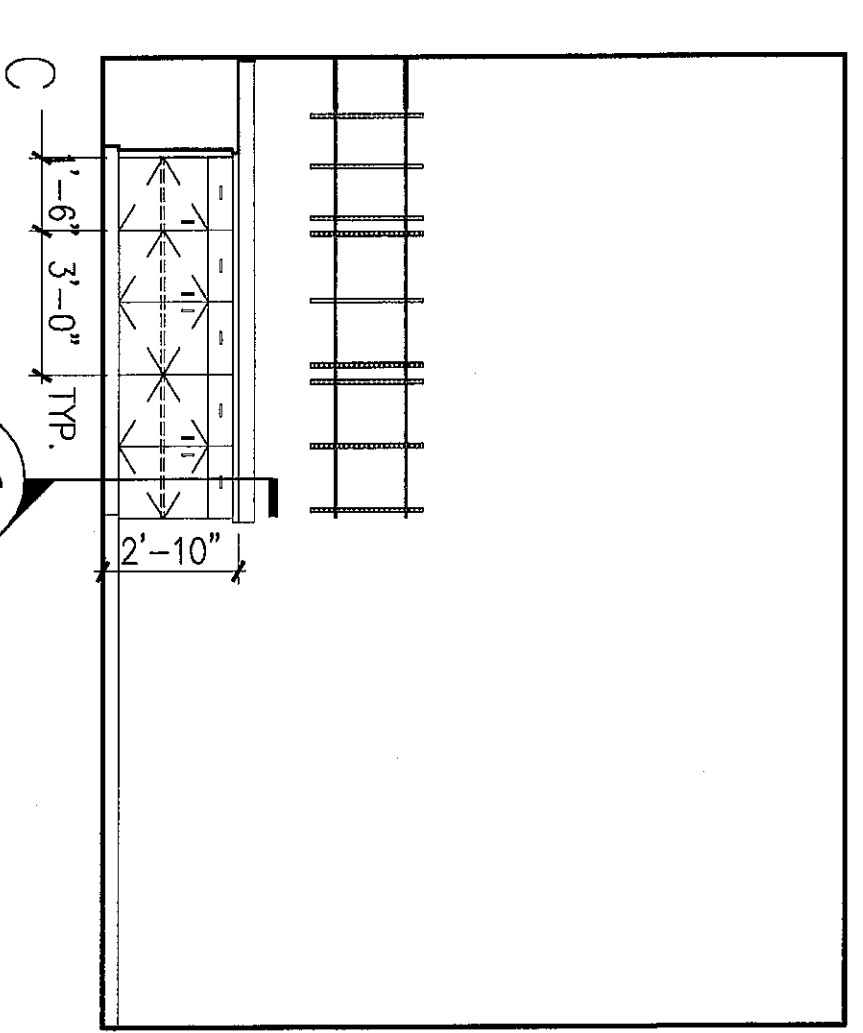
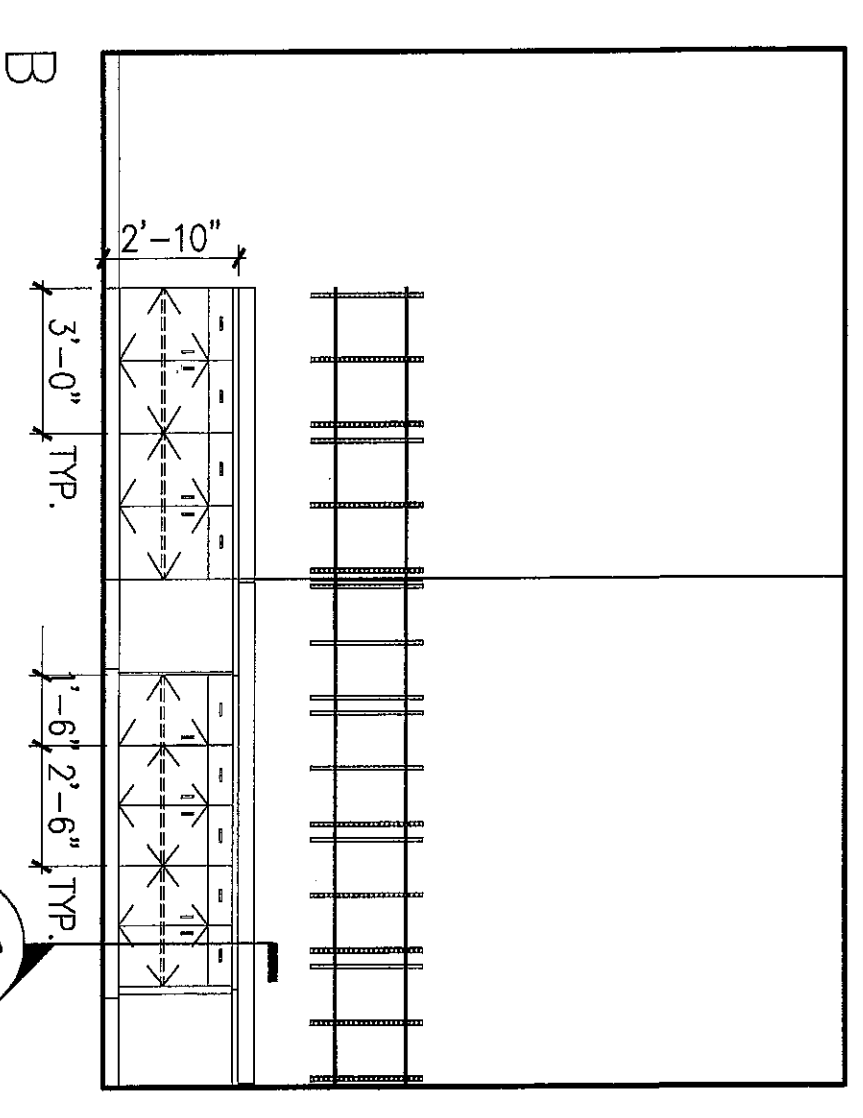
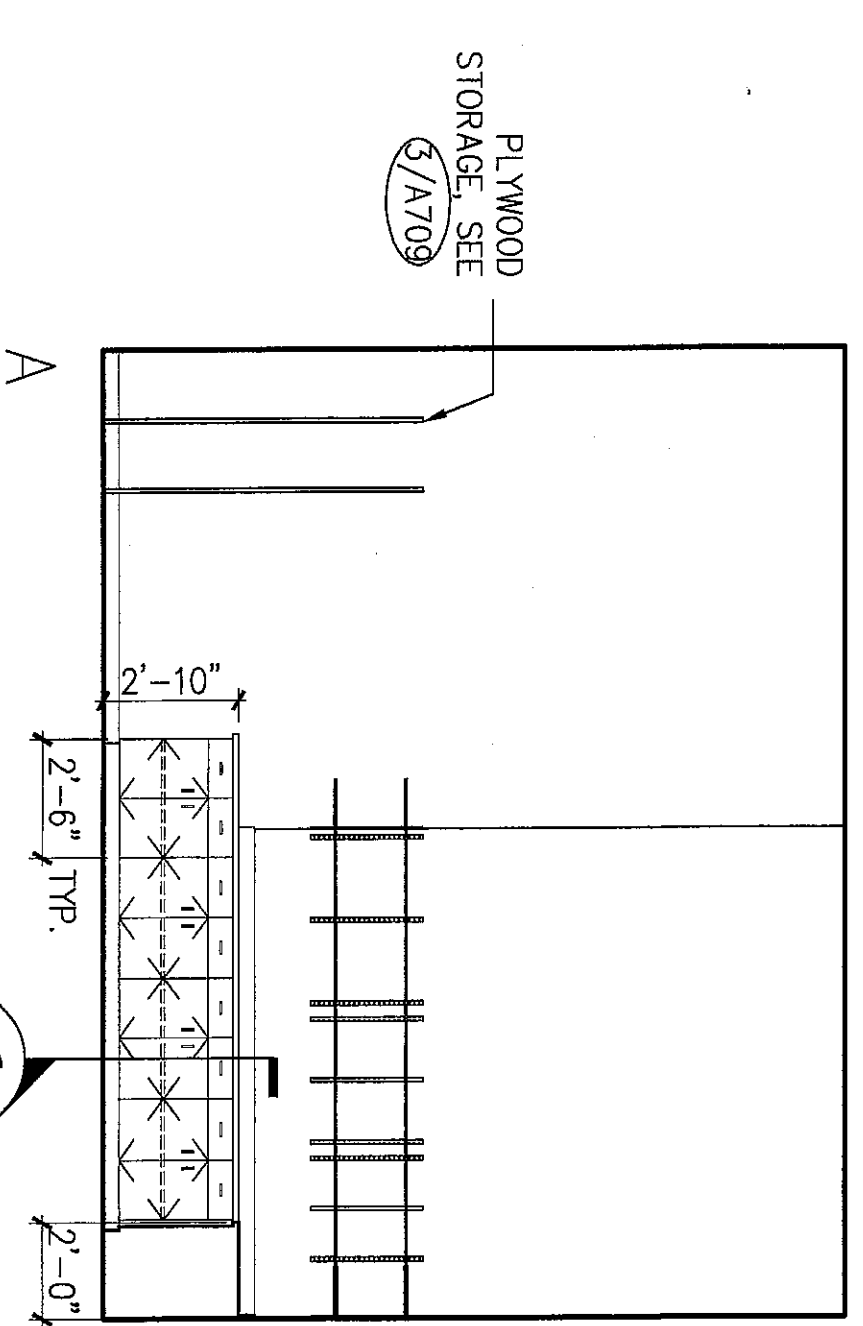
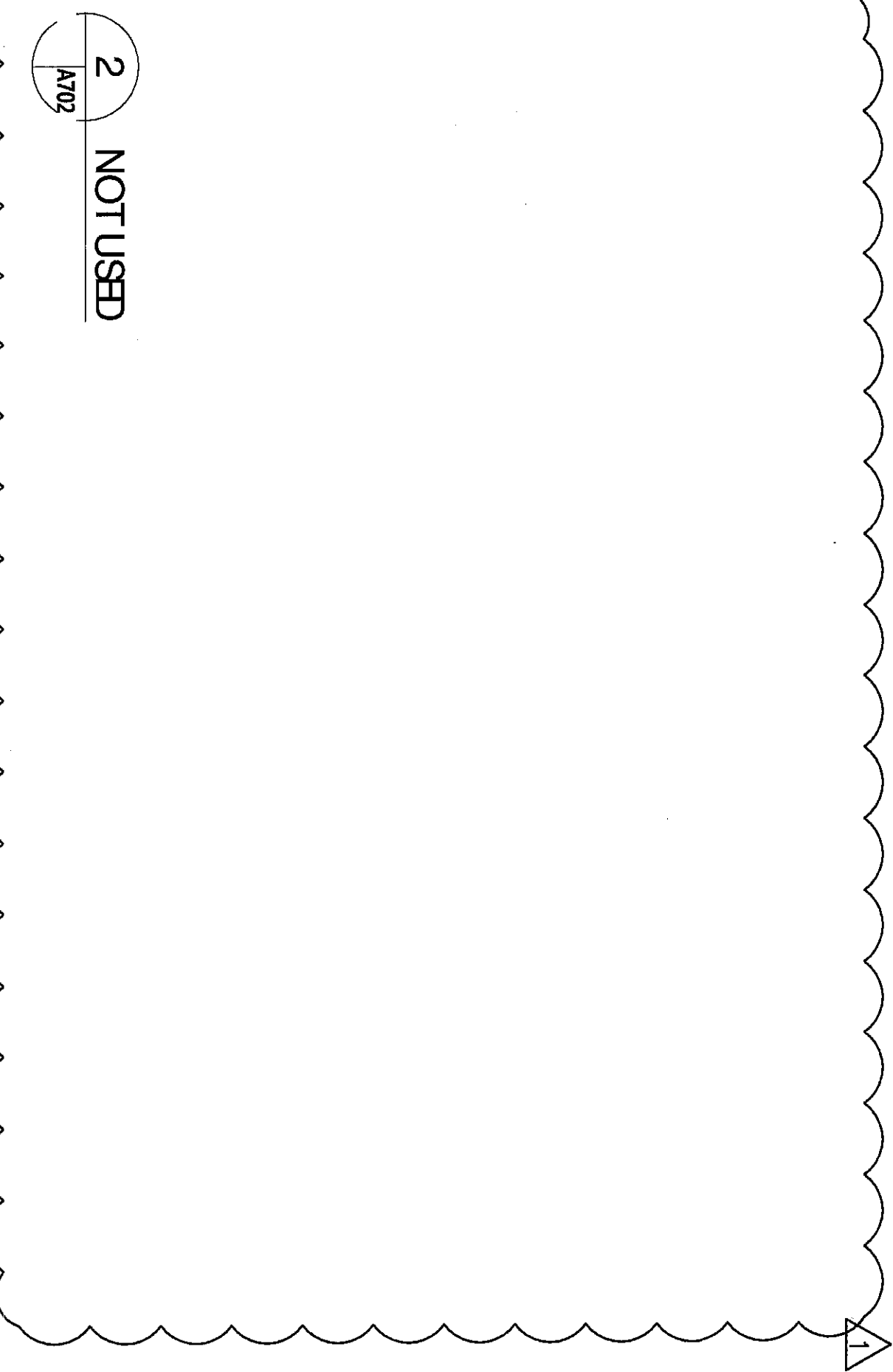
5 STUDENT LOUNGE 110
SCALE 1/4" = 1'-0"



4 STUDENT STUDIOS 109
SCALE 1/4" = 1'-0"



3 RASHER 108.3
SCALE 1/4" = 1'-0"



1 SCULPTURE STORAGE 108.1
SCALE 1/4" = 1'-0"



ADDENDUM #3

NO.	REVISION/SUBMISSION	DATE
432008		

THE COLLEGE OF NEW JERSEY
New Art & IMM Building
Ewing, New Jersey

DATE: 2.20.2008
SCALE: AS NOTED
EYP PROJECT NO. 1006044.01
DESIGNED BY: RG
DRAWN BY: EC
CHECKED BY: BL

Matthew S. Chalkour
LICENSE NO. 000300 ARCHITECT

INTERIOR ELEVATIONS
FIRST FLOOR