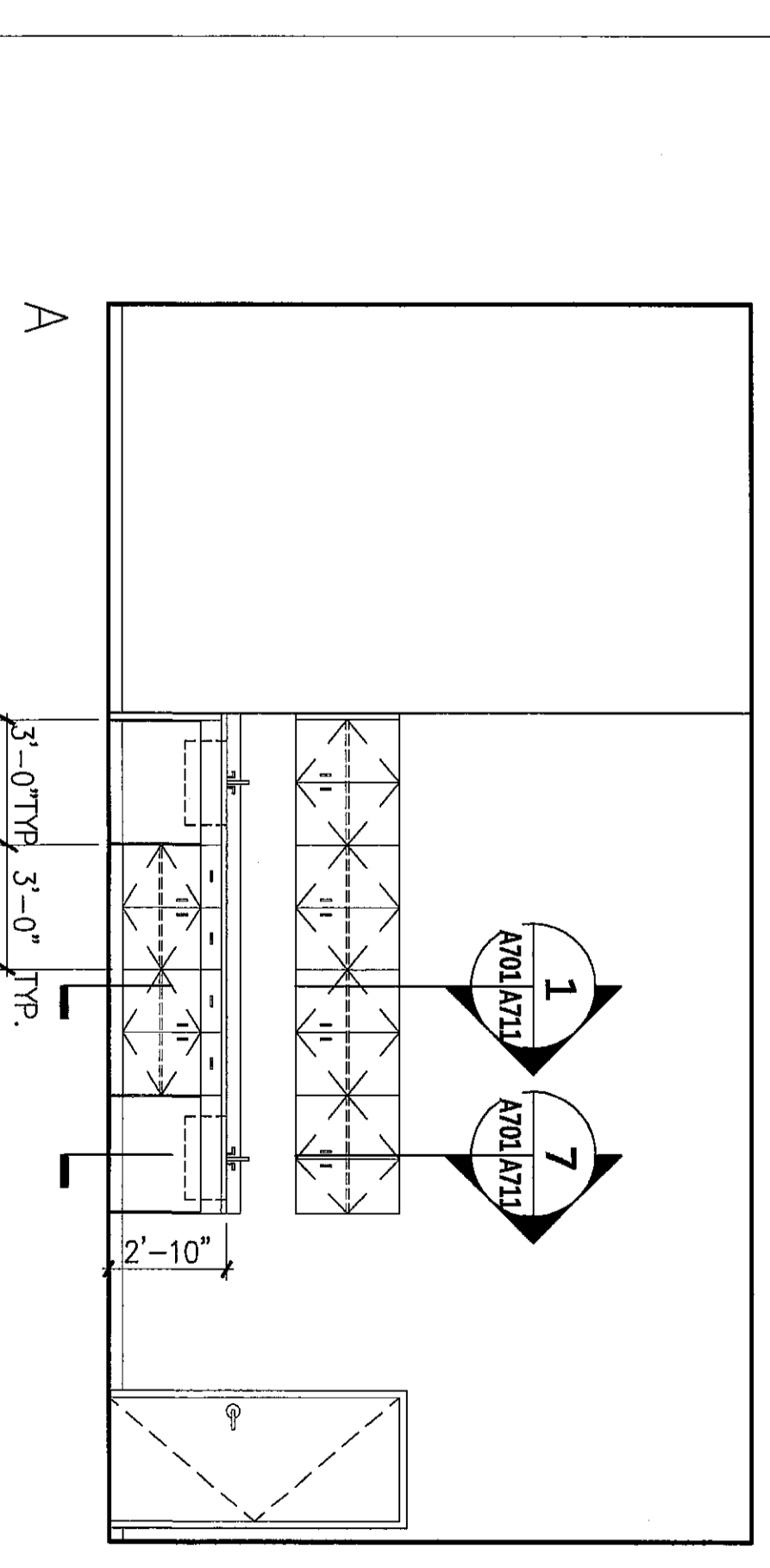
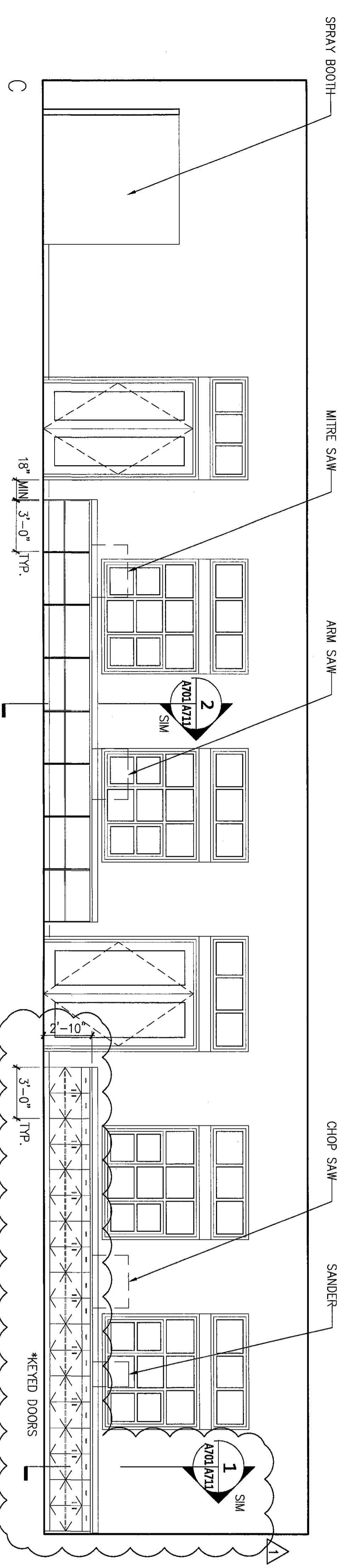
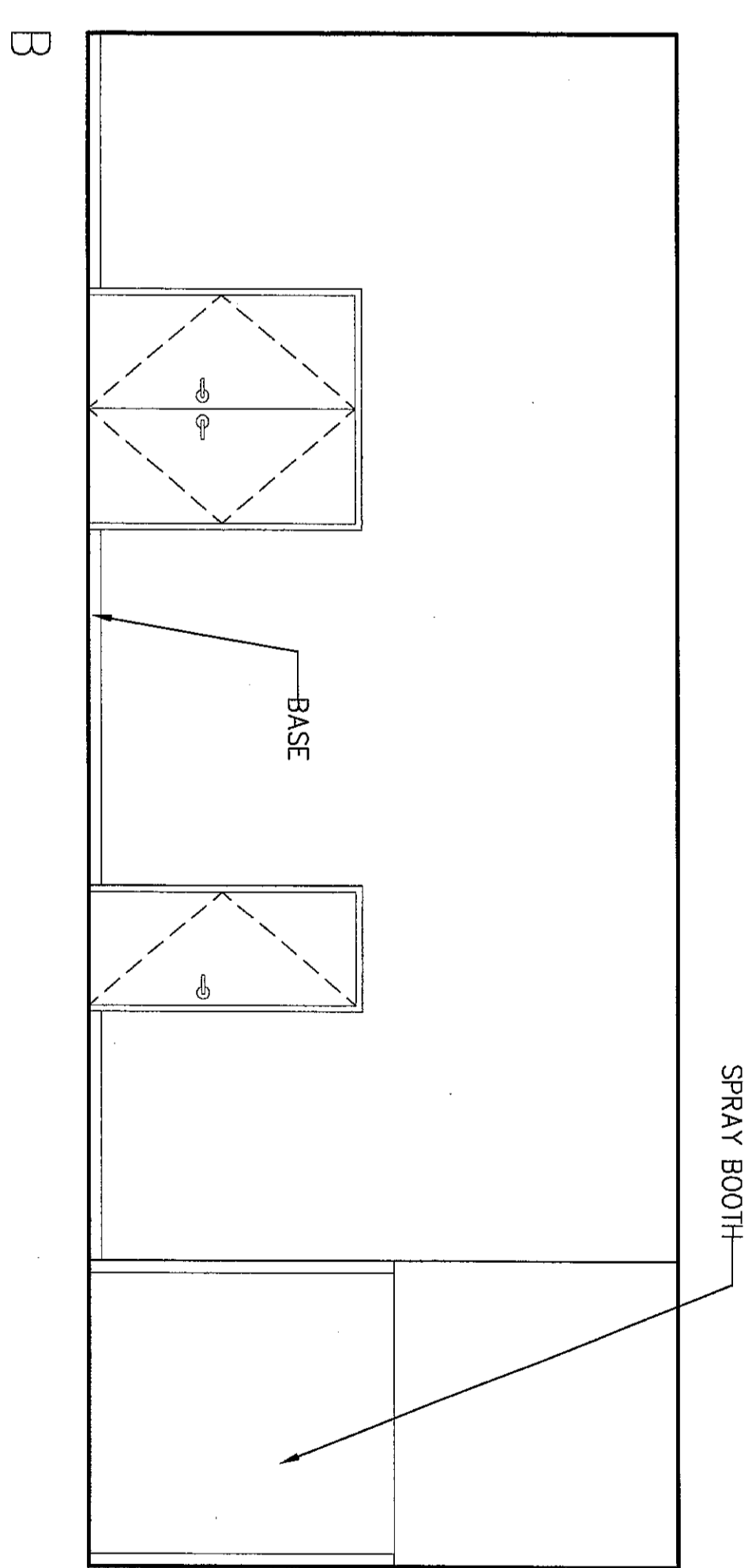
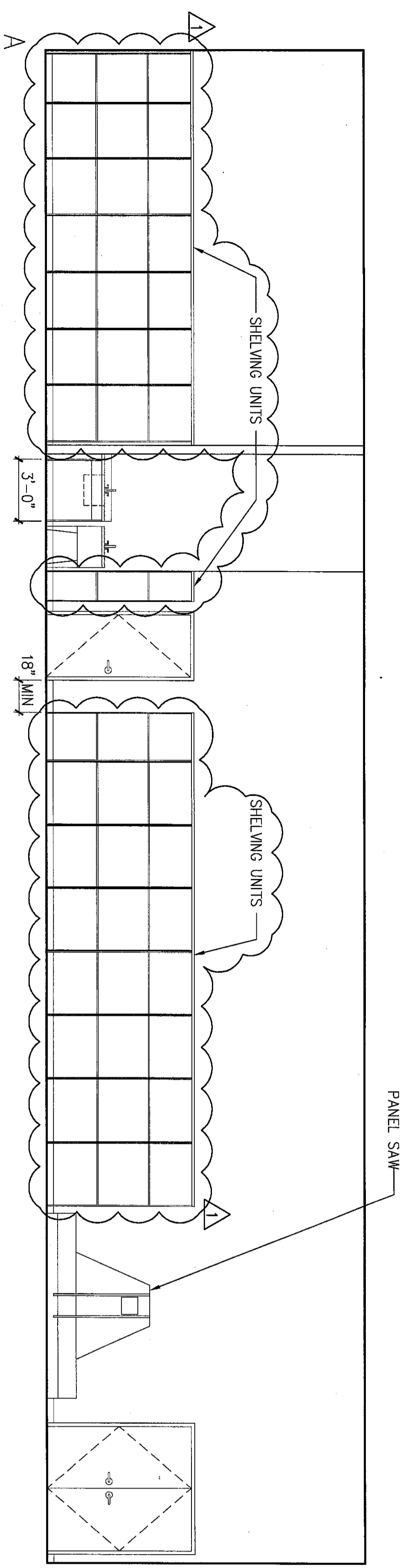


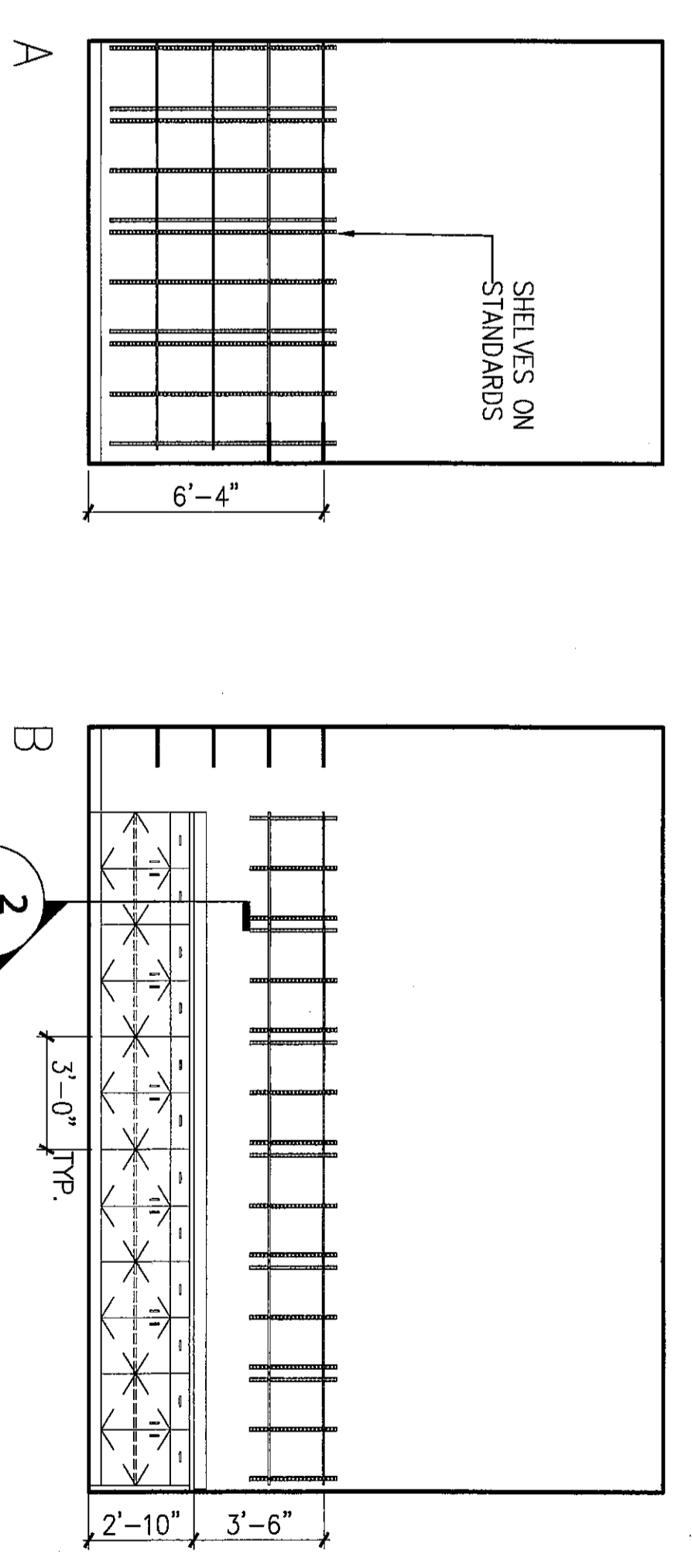
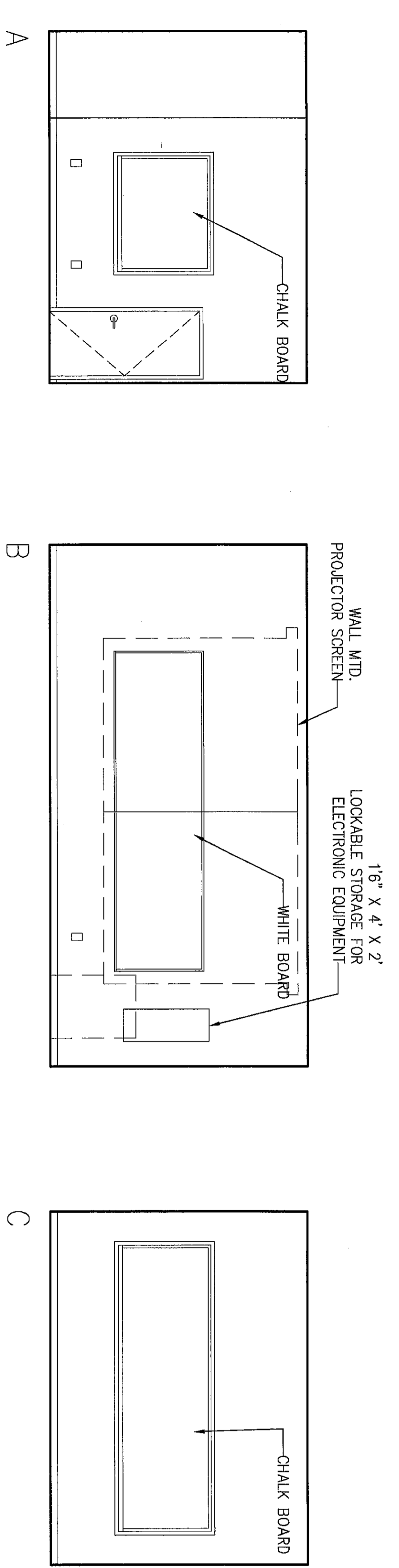
GENERAL NOTES

1. ALL CHALKBOARDS, WHITEBOARDS AND TACKBOARD TO BE MOUNTED 30" AFF
2. WALL MOUNTED PROJECTOR SCREEN TO BE MOUNTED 11 1/8" AFF



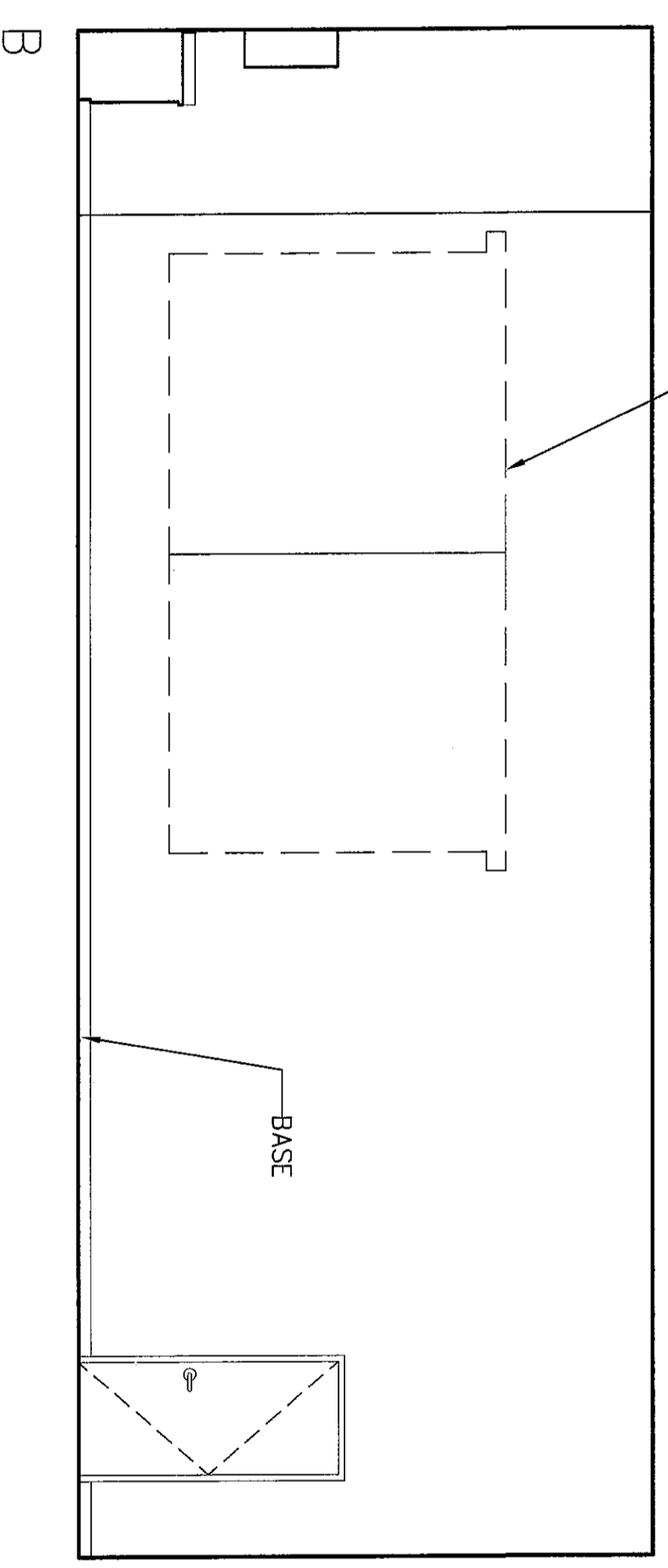
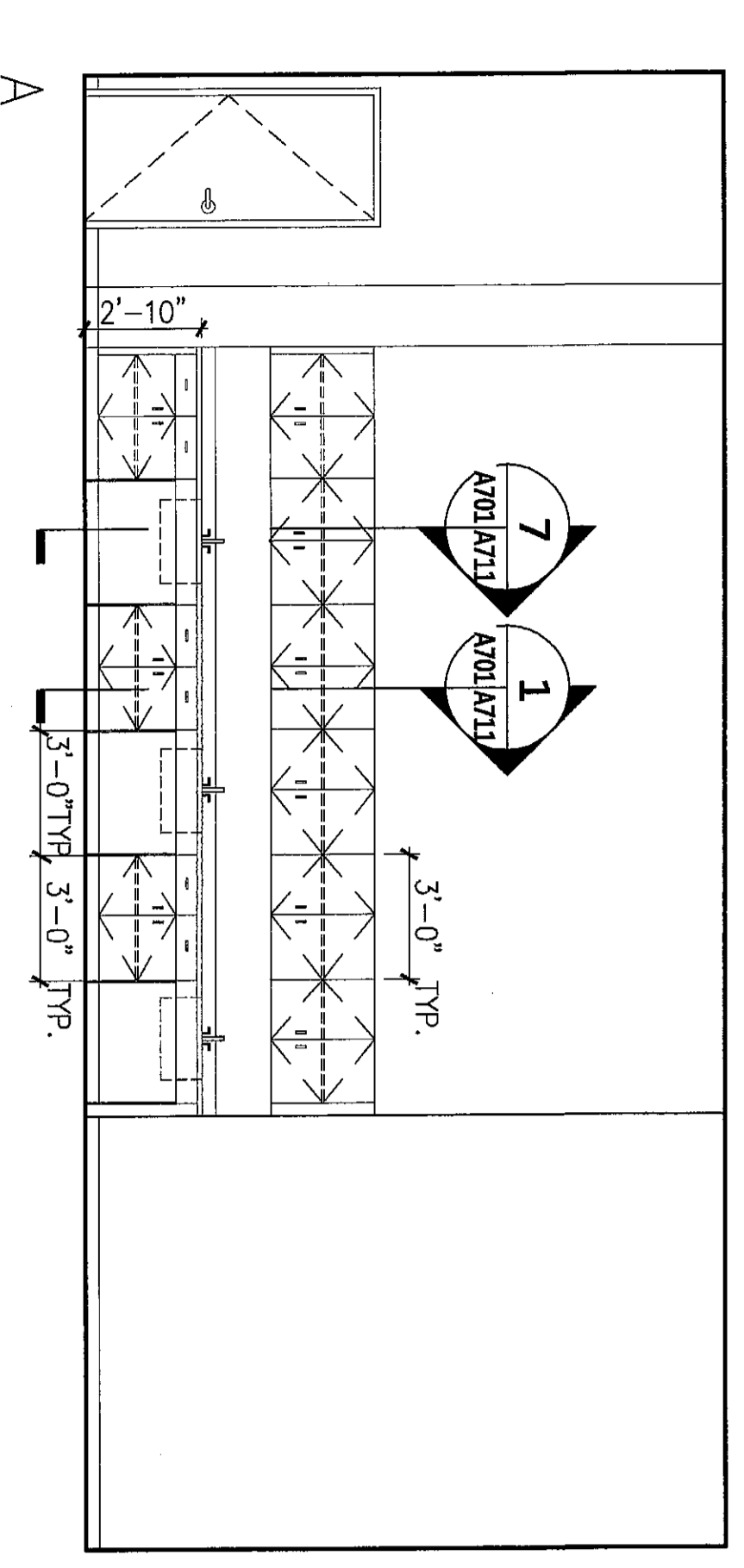
6 SCULPTURE STUDIO 108
SCALE: 1/4" = 1'-0"

5 CERAMICS 104
SCALE: 1/4" = 1'-0"



4 SHARPED SEMINAR 103
SCALE: 1/4" = 1'-0"

3 ART ED STORAGE 102.1
SCALE: 1/4" = 1'-0"



2 ART EDUCATION 102
SCALE: 1/4" = 1'-0"

1 LOBBY 101
SCALE: 1/4" = 1'-0"



| NO. | REVISION/SUBMISSION | DATE |
|-------------|---------------------|-----------|
| ADDENDUM #3 | | 4.12.2008 |

THE COLLEGE OF NEW JERSEY

New Art & IMM Building
Ewing, New Jersey

DATE: **2.20.2008**
SCALE: **AS NOTED**
EYP PROJECT NO.: **1006944.01**
DESIGNED BY: **RG**
DRAWN BY: **EC**
CHECKED BY: **BL**

INTERIOR ELEVATIONS

Matthew S. Chalfoux
LICENSED ARCHITECT
NO. 10000